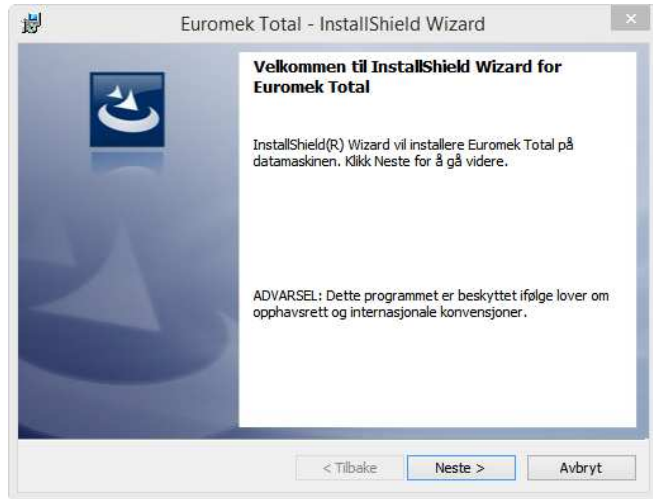
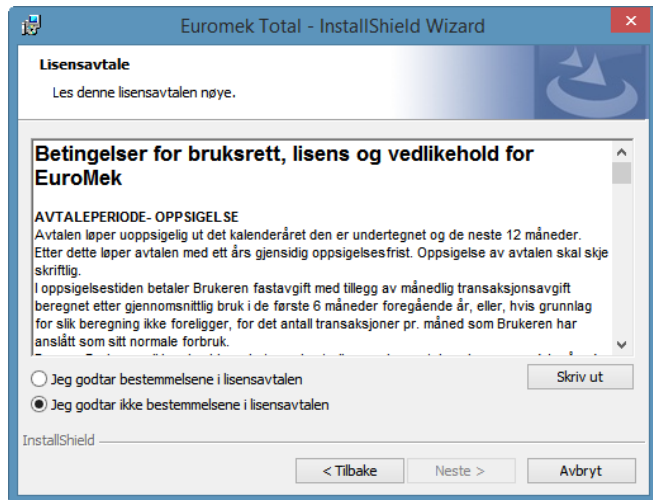


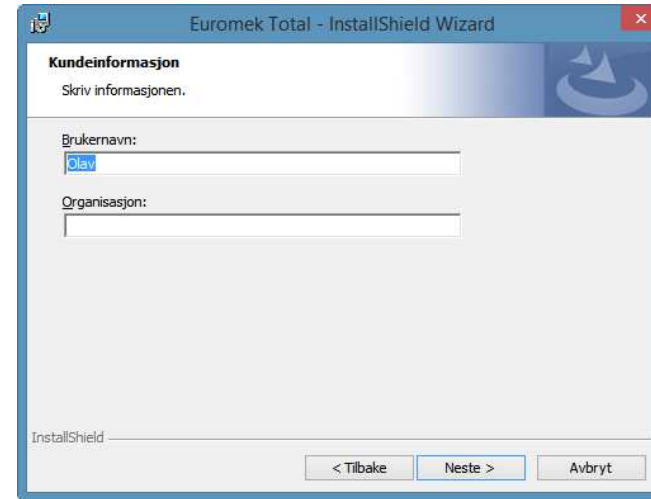
1. Velg neste



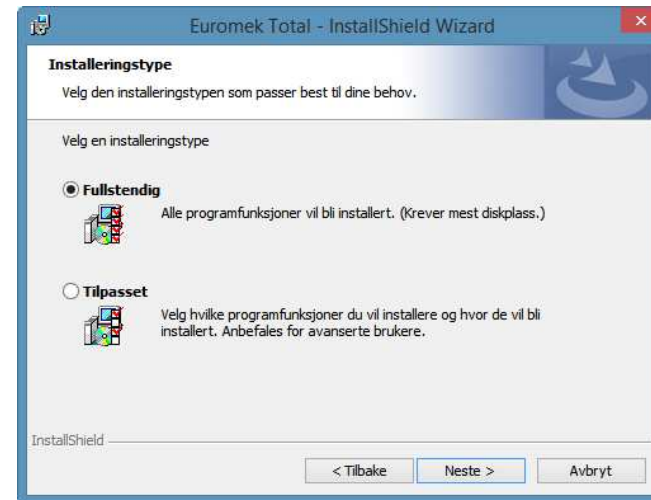
2. Godta betingelser, og velg neste



3. Velg neste

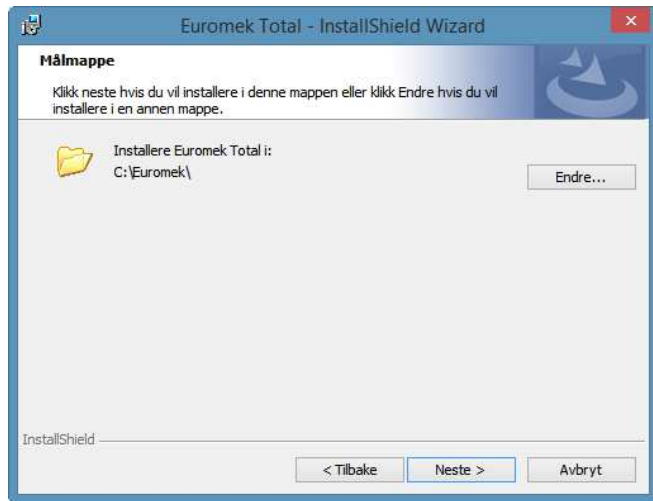


4. Velg Fullstendig og velg neste



5. Her velges hvor EuroMek skal installeres.

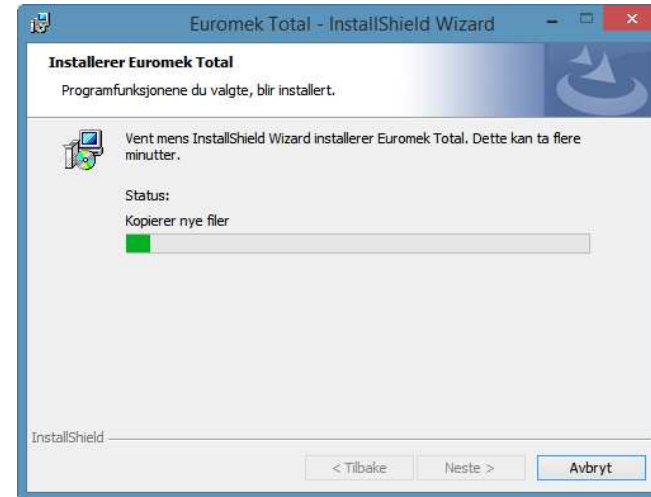
Default er C:\Euromek. Velg neste



6. Trykk påvalget: Bare for meg ()



7. Innstallasjonen kjøres



8. Trykk på fullfør

